

PRESS RELEASE

Target group-specific and concentrated like nowhere else
RO-KA-TECH 2019 breaks all records

Bad Hersfeld, Wednesday, May 29, 2019. Milling and sewer rehab robots, flushers, inspection technology and much more: Fans of pipeline and sewer technology certainly got their money's worth at this year's RO-KA-TECH, which took place from May 8 to May 10, 2019 in Kassel. The entire spectrum of services from cleaning to inspection to rehab was on show for the first time, presented by 300 exhibitors. Thanks to the outstanding organization of the industry meet-up on the part of the organizers, VDRK, the mood in the trade fair halls and the outdoor area was extremely positive and business-oriented. There was also an abundance of both national and international contacts at the event.

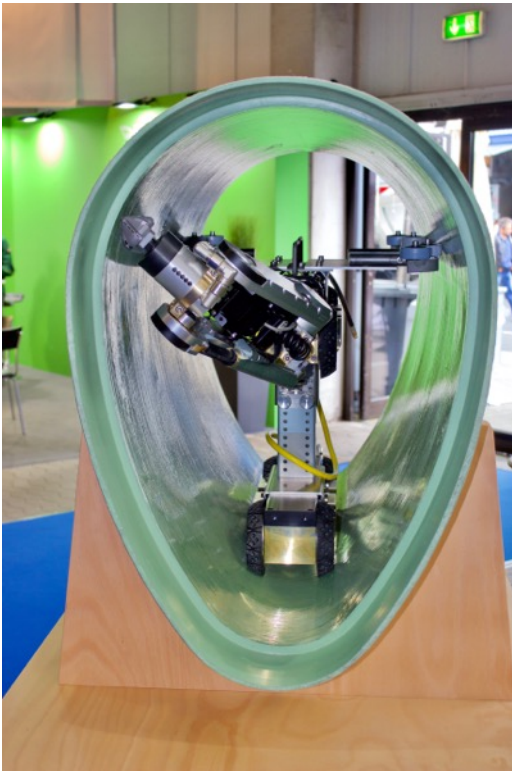


Caption 1 There was a great atmosphere at the SCHWALM Kanalsanierung outdoor stand at RO-KA-TECH

PRESS RELEASE

The main attractions

The Schwalm trade fair team for robotics and sewer renovation welcomed many guests from near and far at their indoor and outdoor stands in Kassel. In particular, the presentation of brand new in-house developments with new tool adaptors that have been added to the range, as well as the diversification of some of our most popular SCHWALM SYSTEM products and live demonstrations of our compression plugs and lateral connections garnered a lot of interest. The Schwalm products have been thoroughly tested and many practical questions about the technology and its application could be clarified by the Schwalm Robotic and Kanalsanierung trade fair team directly on site, where they also shared some insider expertise with the trade fair visitors.



There was a lot of interest in the carriage designed for use with the Talpa FSR 2060 in egg-shaped pipes. Realistically set-up in an original egg-shaped pipe prototype, the trade fair visitors had the opportunity to see a product that many of them were familiar with, although only a few had seen the latest version with its new and simplified settings options. Due to the conical construction of the egg-shaped pipe, Schwalm Robotic GmbH had already developed their own robotics system extension some time ago in order to ensure the stability of the Talpa FSR 2060 when used in egg-shaped pipes.

Caption 2 Schwalm Robotic presents egg-shaped pipe accessories for the Talpa

PRESS RELEASE

The extension consists of a separate carriage that is used in the narrow floor of the egg-shaped pipe, the position of the robot can be increased as needed and guidance rails, which can also be set according to your needs, stop the robot from tipping over in wider areas. Thanks to this carriage, which has been specially adapted to the shape of the sewer pipe, the Talpa FSR 2060 can work just as effectively as it would in a circular pipe.



Visitors were also able to take a look at upgrades to existing products, as well as other products that are currently in development, the presentation and function was looking forward to seeing.

Caption 3 Schwalm Robotic presents egg-shaped pipe accessories for the

Equally, a stoneware pipe junction that seemed quite unremarkable at first glance captivated many visitors, particularly local authorities and engineering firms, to the Schwalm Kanalsanierung outdoor stand. The most commonly asked question was: How is it possible to perform such a thorough surface preparation? "We achieved this high-quality result by grinding the surface with the Talpa FSR 1330 or 2060 and the new tool adaptors with flexible shafts", explained Martin Schwalm. "This results in a roughened pipe surface, allowing for an optimal connection of the hat seal and the pipe wall."



adaptors with flexible shafts", explained Martin Schwalm. "This results in a roughened pipe surface, allowing for an optimal connection of the hat seal and the pipe wall."

Caption 4 : A cross-section of a stoneware pipe rehabilitated from the inside captivated visitors to the Schwalm Kanalsanierung stand.



PRESS RELEASE

“Our trade fair concept went down well again this year,” summed up Martin Schwalm. “Both stands really grabbed people’s attention and were extremely positively received. RO-KA-TECH is, as it always has been, an excellent platform for nurturing existing business relationships and forging new ones. We’re already looking forward to RO-KA-TECH 2021! It’s fast becoming the top event in our industry.”

Photos: 4

Caption 1: There was a great atmosphere at the SCHWALM Kanalsanierung outdoor stand at RO-KA-TECH 2019

Captions 2+3: Schwalm Robotic presents egg-shaped pipe accessories for the Talpa FSR 2060

Caption 4: Amongst other things, a cross-section of a stoneware pipe that had been rehabilitated from the inside drew the attention of the visitors to Schwalm Kanalsanierung.

About SCHWALM



Systems for trenchless partial sewer rehabilitation

Schwalm Robotic GmbH manufactures robotic systems and special vehicles for trenchless sewer rehabilitation. The systems' areas of application include main line and house connection rehabilitation, video diagnostics to assess damage, and image documentation. Robots, equipment, and sewer rehab vehicles are proprietary developments of Schwalm and are protected by patents.

www.schwalm-robotic.de



Pipeline, sewer, and industrial services

Schwalm Kanalsanierung specializes in sewer cleaning, the disposal of cleaning residues from the emptying of cesspools and grease separator services, video sewer reach inspection, and methods of partial relining as part of trenchless rehabilitation of main pipes and house connections.

www.schwalm-kanalsanierung.de

Shared website for Schwalm Robotic and Schwalm Kanalsanierung: www.schwalm-kanal.de/en

Schwalm press contact ■

Tina Pfeiffer-Dresp • Agency for Corporate Communication

Marienstraße 4 • 58642 Iserlohn

Tel.: +49 2374 50 39 911

E-mail: tptransparent@t-online.de